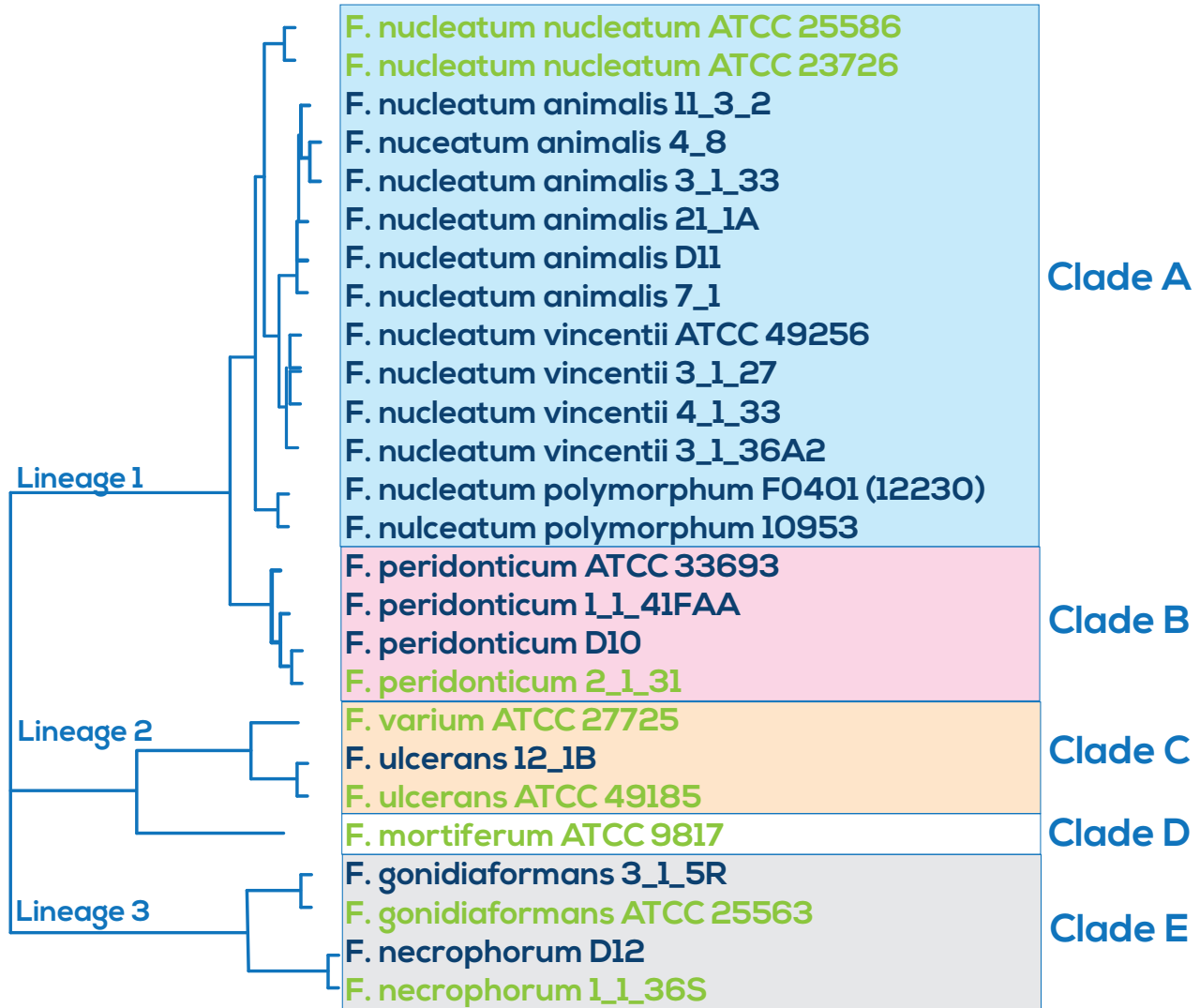


FusoPortal Genomes in Green



This tree was adapted from [Manson McGuire et al, mBio 2014](#), from the laboratory of [Ashlee Earl](#).

Manson McGuire, A., Cochrane, K., Griggs, A.D., Haas, B.J., Abeel, T., Zeng, Q., Nice, J.B., MacDonald, H., Birren, B.W., Berger, B.W., Allen-Vercoe, E., Earl, A.M., 2014. Evolution of invasion in a diverse set of *Fusobacterium* species. *MBio* 5, e01864.